

AccellosOne Warehouse Management System



Version 6.4 Features

Advanced Workcenters for Orders and Receipts to manage orders/receipts and view aggregated order/receipt information in real time.

Advanced Inventory Workcenter to view aggregated inventory information in real-time

Advanced Task Workcenter to assign orders, receipts, and directed moves to specific users, monitor tasks and balance workloads in real-time

Extensible Hold Codes for increased traceability

“True” Decimal support lets you define up to 6 decimals of precision for quantity and/or packsize on a product-by-product basis

Enhanced, scalable wave labels let you print simultaneously on up to 8 label printers when orders are waved from the Order Workcenter

Handheld Architecture Improvements including support for Secure Transactions (HTTPS/SSL) and Native Multi-threaded Web and Telnet handhelds

Enhanced Order and Receipt Entry Workspace functions

Ability to capture user-defined Value Added Services

Integration to AccellosOne Bill

Enhanced integration with AccellosOne Workspace, AccellosOne Ship, AccellosOne Image, AccellosOne Report, AccellosOne Optimize

# AccellosOne Warehouse

## Directing your Warehouse Efficiency

### The Warehouse As A Differentiator

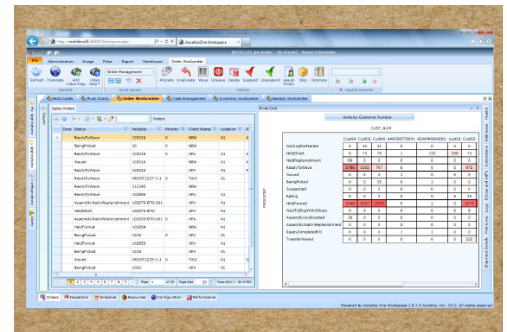
The Aberdeen Group recently published a study that identified these as the top issues facing today's supply chain executives:

- The need to support increased sales without increasing staff or space
- Limitations/availability of warehouse space
- Increasing demand/supply fluctuations

Today's warehouse managers are consistently finding that 2 to 5% improvement across various performance metrics can mean hundreds of thousands of dollars in bottom-line returns to the business.

With the economy that we find ourselves in, there aren't many places within the organization, short of reducing head count, that a company can find that kind of return. Focusing on technology to complement your business processes can help you manage key performance indicators within the warehouse like:

- Order accuracy
- Order shipped on time and complete
- Minimize inventory carrying costs
- Decrease warehouse labor costs



Accellos can help. We've built our AccellosOne Warehouse solution to provide the out of the box tools and the extensibility to tackle even the most difficult tasks in the warehouse.

### Enterprise Scalability

AccellosOne Warehouse is designed for a small to mid-sized business. That means that it doesn't require an army of IT staff to support it. And, just like most businesses in this category, it is built to start where you need it and grow to where you want it. Make your first step in using Warehouse as simple or as immersive as you choose. Rest assured that it will scale along with you with features that approach those of the largest warehouse management vendors in the marketplace. But, priced to fit your budget not that of a Fortune 100 company.

## AccellosOne WMS

### TIGHTEN CONTROL

AccellosOne provides you with the tools to maintain better inventory accuracy - minimizing writedowns and writeoffs. To insure compliance with your customers labeling requirements. Improve your control in these and many more key areas of your business

### MAXIMIZE EFFICIENCY

Leverage our advanced processes to improve your picking and receiving functions. To eliminate manual order checking. These are just a few areas where AccellosOne helps your team gain efficiency and effectiveness.

### IMPROVE VISIBILITY

AccellosOne's web-centric design gives you the ability to allow internal and external users visibility into the status of warehouse operations. Providing visibility creates competitive differentiation for your business that drives ROI.

### CONTACT ENABLING AT:

Suite 2B, 5-7 Compark Circuit,  
Mulgrave Vic 3170, Australia  
T +61 3 9501 0100  
F +61 3 9501 0199  
[www.enabling.net](http://www.enabling.net)

**enabling**®

**Accellos**

### Breadth, Depth And Reach

In the web-centric computing world we live in there are three "legs" to the system "stool". How broadly does an application cover? How deep in functionality? And, how far is its reach? AccellosOne Warehouse is built on a web-centric design, so it can reach as far as you'd like it to. It covers quite a bit of ground, with available modules for not only the traditional warehouse management features, but dynamic directed putaway, container building, cartonization, repackaging, voice and RFID to name a few. And, its functionality is deep enough to automate a multi-billion dollar organization just as easily as a single warehouse startup company.

### Integration By Design

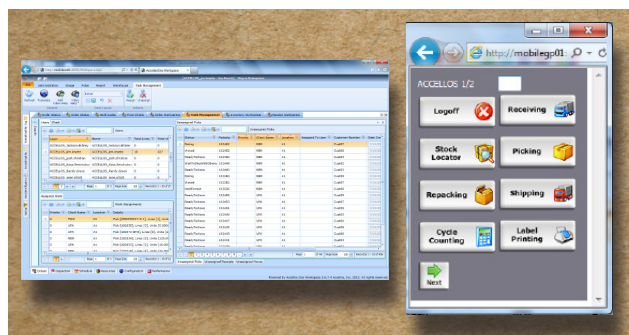
Great warehouse systems are often determined by their ability to integrate to the source of orders to fulfill or receive as much as by their innate functionality. Our AccellosOne Integrate, a configurable web services integration platform, stands between the warehouse and your ERP, order management, ecommerce or purchasing system(s). The tight relationship between Warehouse and Integrate gives you the best of both worlds – a comprehensive warehouse system with a dynamic engine that will allow you to integrate it to your current system. Or leverage one of the many prebuilt integration toolkits for popular ERP systems from Microsoft, Sage, SAP and Infor.

### Flexible Deployment Options

Warehouse is easy to take advantage of. It is deployed using "cloud" technology either on premise or premise. So all you have to do is to decide when to start and how involved you want your IT staff!

### Call Us Today For More Details

AccellosOne Warehouse can help you lower your costs, improve your customer service and drive operational efficiencies in your business. Isn't it time to start?



+61 3 9501 0100

[eteam@enabling.net](mailto:eteam@enabling.net)

[www.enabling.net](http://www.enabling.net)

### ABOUT ENABLING

Enabling is a recognised leader in the provision and support of business management applications throughout Australia and New Zealand with more than 1,000 customers across all industry types. They are a highly experienced consulting service partner with a focus on assisting organisations evolve and implement integrated relationship management solutions to meet their business and technology needs. Enabling specialise in front to back office projects that demand focused industry and business knowledge and back it up with years of experience and comprehensive technology expertise – creating a unified and enhanced capability to deliver value and success to their customers.