

# Info-Explorer

For Sage 300 ERP (Accpac)



WITH WRITE-BACK FOR BUDGETING & FORECASTING

## Self service for the right information at the right time Helping you make the right decisions Business intelligence without the usual price tag

### What is Info-Explorer?

Info-Explorer from Orchid Systems is a powerful, intuitive analysis tool that allows you to explore your Sage 300 ERP (Accpac) data and other data, providing insight to help you increase the performance of your business. With data input too, you can budget and forecast in the same tool.

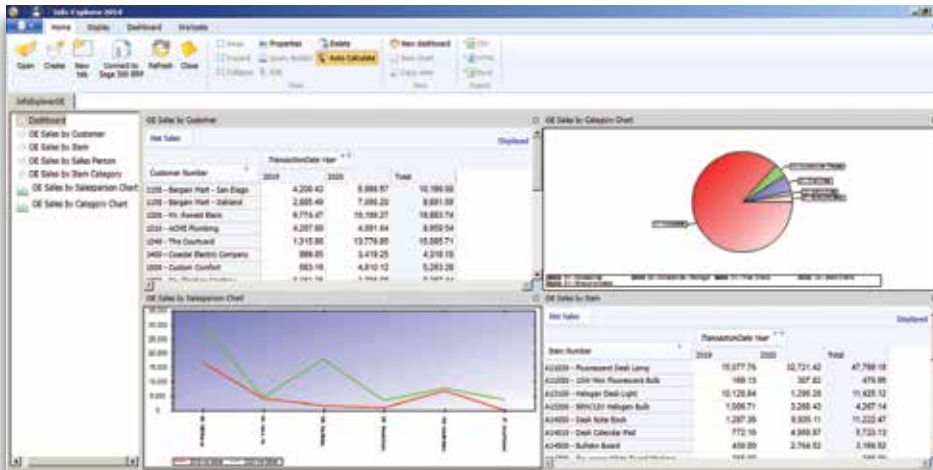
Info-Explorer helps address the following issues experienced by many businesses today:

- Lack of accurate and timely information resulting in guesswork and poor decision making.
- Too much information to analyse easily.
- Key operational data not available for easy analysis.
- Time consuming and inefficient processes to prepare data.
- Over reliance on spreadsheets.
- Business and productivity monitored using intuition and not operational metrics and targeted financial outcomes.

### The Benefits

Info-Explorer will help you:

- Reduce costs and improve productivity.
- Make key business information available, resulting in better decision making.
- Improve customer service and loyalty through better customer insight.
- Gain visibility to potential problem areas.
- Budget with greater insight, slicing & dicing actual and budget.
- No need to manipulate many spreadsheets.
- Free the IT Dept. from routine reporting issues.



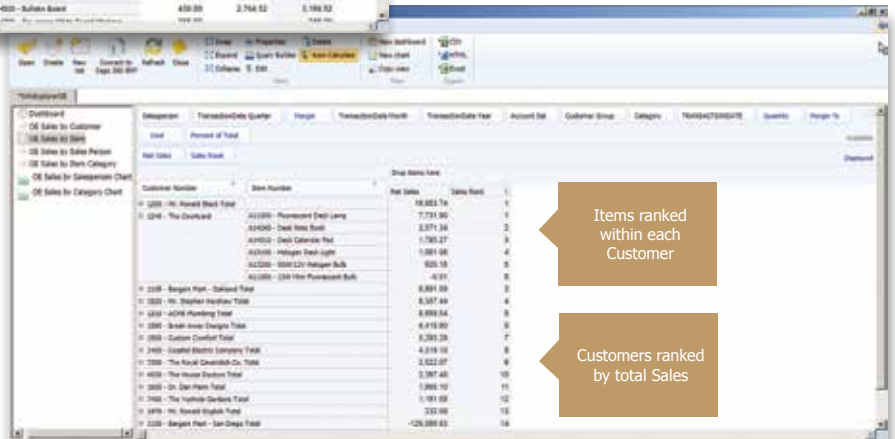
For example, look at daily sales results, or change the time period, compare with budget – and pull in specific regions, employees, products – to better understand the data. And drill down to data entry screens for full detail, or keep it high level.

Unlike static reports, Info-Explorer gives you a core of information where you control the view – adding, deleting, and changing what you show – and seeing it at once.

[Dashboards can contain graphs and grids from multiple queries based on multiple databases]

It is easy to be overwhelmed by the volume of data in your system, with a limit to the number of reports we can manage. Using Info-Explorer you can obtain an almost limitless number of views from a single cube - instead of needing multiple reports for analysis. You can use the same tool for budgeting too.

You can filter your data, look at it in different ways, add and remove facts and dimensions to show more detail or focus on high level results, so that you better understand what is happening.



[User defined calculations can be performed in the cube, e.g. "Sales Rank", shown here.]



# Focus on what is important Streamline budgeting, forecasting, modelling The ideal analysis tool - easier than multiple reports

## Using Info-Explorer

Info-Explorer allows you to summarize, drill down into and filter your Sage 300 ERP data in real time, as well as prepare budgets, giving you a clear insight into your business operations, helping you make the right decision, every time.

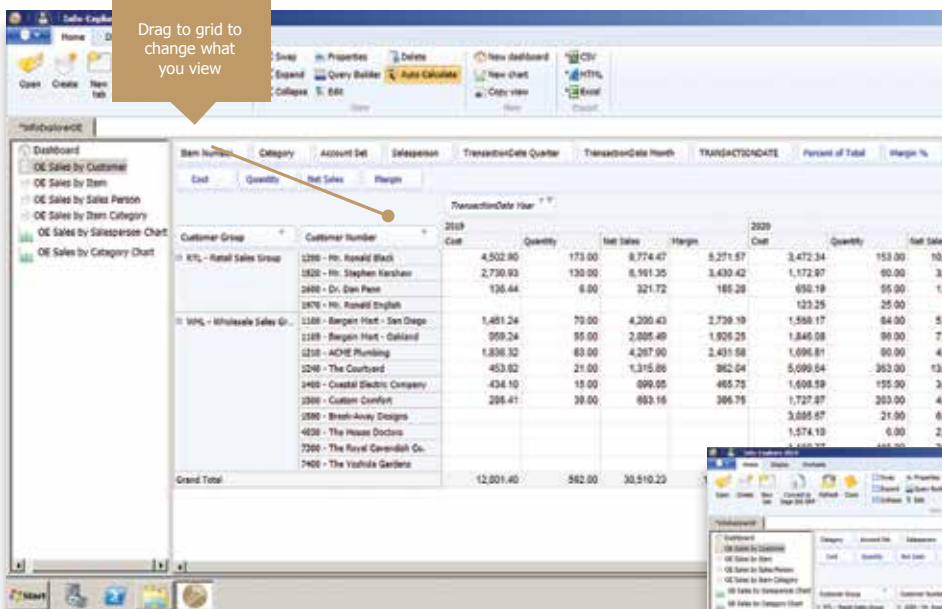
Unlike spreadsheets, there is no need to insert, cut, paste and check formulae and any links or deleted columns. This easy manipulation of information that you see is made possible because huge amounts of data are summarised in the background for easy analysis. In-memory technology ensures fast results. Info-Explorer allows easy changing of views without the dangers of spreadsheets or needing spreadsheet knowledge.

You can prepare budgets, forecasts, models, then review the results, simply changing dimensions e.g. product, customer, region, period, employee, etc, for clearer insight. You can use Info-Explorer to analyse sales, financial results, costs, inventory, purchasing and supply chain, operations, manufacturing, customer service and more. Use Info-Explorer for alerts and investigative analysis, your own detective tool.

61% of Business and IT executives... make critical decisions without relevant information. *Forbes Insights survey 2010*

## Key Features

- Real time - analyse your data in real time, "slice and dice," with drilldown to data entry screens.
- External data - include data from other application databases (SQL).
- Budget in same environment as analysis, with safety of write back to the database.
- Eliminate multiple budget spreadsheets & obsolete data.
- Multiple spread methods enable faster budget preparation.
- Easy formatting - create your own styles to highlight results - e.g. "traffic light" reporting.
- Versatile, economical, flexible:
  - From one cube - create and save multiple Views.
  - From single View - create and save multiple Charts.
- Dashboards - create your own, based on views and charts.
- Calculations - include user defined calculations on cube data.
- Standard cubes included for GL, AR, AP, OE, PJC, RMA, to simplify & speed up getting started.
- Export Views to Microsoft Excel®, CSV and HTML.
- Users do not need to be logged into Sage 300 ERP or need Lanpaks unless they drill down to Sage 300 ERP data entry screens from the cube. Works on or off-line.
- Optionally schedule and distribute cube extracts with Orchid's Process Scheduler module.

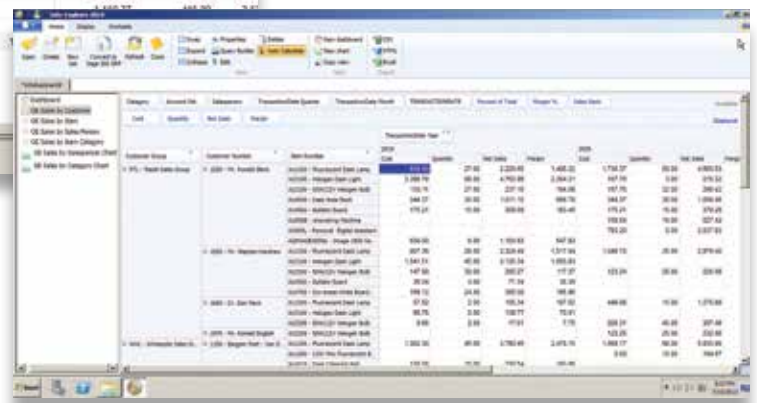


[It is easy to add or remove columns by dragging or removing. This View shows Customer Group and Customer with results. We can add Item by dragging it to grid]

[View with Item added per Customer]

"Within 2 days of purchasing Orchid Info-Explorer every department was able to monitor the sales performance of more than 300 items to over 900 customers. We needed a system that sales reps could use easily, as well as provide the financial analytics for management to continually deliver shareholder value. Orchid Info-Explorer delivered on this."

Customer of Acacia Business Systems,  
Sydney, Australia



## Minimum Requirements

Info-Explorer 2014 requires Microsoft .NET Framework 4.5 and Windows® 7 or above. Info-Explorer is licensed per PC.

Further details from your Sage Software Solution Provider.

Copyright © 2014 Orchid Systems. All rights reserved.

All trademarks are registered trademarks or trademarks of their respective companies.



Suite 2 / 273 Alfred Street, North Sydney, NSW 2060 Australia  
+61-2-9925-0383 / Fx +61-2-9955-3926 / info@orchidsystems.biz

