

Process Scheduler

For Sage 300 ERP (Accpac)

Updated for v2014



Your data is checked regularly - peace of mind
 Automate back-ups, loads, custom processing, day end & batch processing, reports
 Receive alerts only when new errors are detected - manage by exception

What is Process Scheduler?

Developed by Orchid Systems, Process Scheduler enables you to schedule when your Sage 300 ERP (Accpac) data is checked and backed up and to schedule automation of other processes. It maximizes system resource usage by allowing you to automatically perform these tasks overnight, whilst the system is not being used, and automating processes for when required. Checking the integrity of your Sage 300 ERP data and running processes on a regular basis has never been easier!

Process Scheduler Features

DATA INTEGRITY PROCESSES AUTOMATED

- Schedule Sage 300 ERP to check your data integrity unattended.
- Send alerts when new errors are detected.
- Specify which companies and which modules must be checked.
- Keep a history of results of past integrity checks.

SYSTEM PROCESSES AUTOMATED

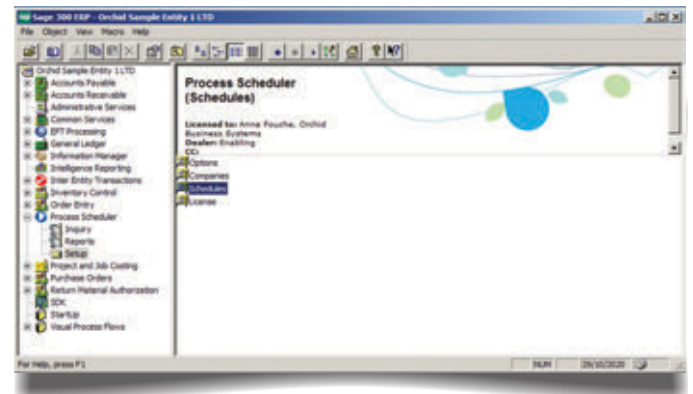
- Run day end and optionally post batches.
- Automatically dump your data for backup.
- Load your data for testing and reporting.
- Schedule custom processes and programs.
- Schedule GL Consolidation Export and Import.
- Reconcile GL Consolidation Import and Export.
- Automate notification of changes to active Sage 300 ERP Modules and Product Update details – per company.
- Close last fiscal period and open next fiscal period and Open new fiscal year.
- Check disc space on nominated drive, and send an e-mail if less than x% is free.

REPORTING PROCESSES AUTOMATED

- Schedule Crystal Reports (in conjunction with Orchid Information Manager Report Runner).
- Refresh Info-Explorer Cubes (in conjunction with Orchid Info-Explorer) and email to specific users.
- Schedule GL FR reports (in conjunction with Orchid Information Manager Report Runner).

FLEXIBLE SET UP

- Define logic to specify what happens next on success and failure of a task.
- Set up multiple schedules as recurring jobs.
- Define e-mail templates to be used when sending status e-mails from Schedules.
- Ability to send emails via SSL.



The Benefits

- Increased data integrity and reliability.
- Peace of mind: critical business data checked automatically.
- Time saved: automating important routine processes.
- System integrity: your data is being checked on a regular, recurring basis.
- Free up valuable system resources and time by running Day End, posting batches and running custom processes overnight.
- Save time: automate GL Consolidation Exports and Imports.
- Easy to run: create and run complex schedules with no programming.
- Improved data security: automate backups through Sage 300 ERP's DBDump utility.
- Save time, increase efficiency: Keep up to date test and reporting databases by loading your data into different databases overnight.
- Easy to learn and use and with the look and feel of an Sage 300 ERP module.

