



Sage Inventory Advisor

Reduce excess inventory.
Reduce working capital.
Minimise stock-outs.

Sage Inventory Advisor is an affordable cloud solution that helps companies reduce excess inventory and free up working capital while minimising stock-outs and increasing revenue.

It is designed to integrate with Sage ERP systems to provide visibility of inventory levels and investment, produce quality forecasts and optimal replenishment recommendations.

Information is presented in a visual dashboard which displays overall performance and provides an early warning of items needing attention.

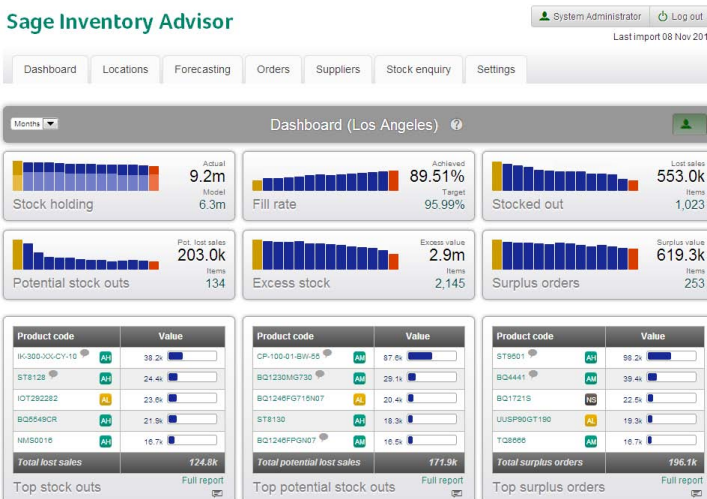
Sage Inventory Advisor is easy to use, quick to implement and can be accessed anytime, anywhere via web browser or mobile device.

Benefits

- **Reduce inventory by 10%-25%**, reduce working capital and improve cash flow.
- **Improve fill rates by 2%-10%**, minimise stock-outs and increase sales.
- **Significantly reduce the time spent** on planning, forecasting and ordering.
- **Better inventory visibility**, including early warning of items needing attention.
- The right inventory in the right place at the right time, **helping you to grow your business.**

“In the first six months, we saw a 14% increase in inventory availability combined with a 38% increase in sales. Sage Inventory Advisor is a highly valued solution that gives our business a competitive edge.”

Steven Cumper, Director and Co-Founder – Medshop Australia (Medical Supplies)



Track performance and identify problem items through interactive dashboards with drill down features



Utilises the latest forecast technology to generate item forecasts while facilitating manual overrides

Features

User Interface Easy to use web and mobile interface with contextual information display for clarity.

Dashboard Tracks and displays key inventory performance metrics. Provides exception lists identifying top stock-out, potential stock-out, surplus order and excess items. Allows drilldown to item details.

Inventory Forecasting Sophisticated forecast engine generates item forecasts incorporating seasonality and trends, with graphical user interface for refinement.

Inventory Monitoring Provides early warning of stock-outs, potential stock-outs, surplus orders and poorly performing forecasts.

Classification Matrix A unique classification matrix that highlights your most important items, so you can focus on the items that make a significant difference in your business.

Ordering Schedule Shows what items to order and when to order them to minimise stock-outs and future excess.

Order Management Visibility of existing orders. Exceptions lists that highlight where there is currently too much on order or not enough on order.

Interactive Reports Provides critical and detailed information to optimise inventory.

Supplier Performance Monitors and displays actual supplier delivery performance.

Item Data Provides a single view of all item information, in one place

Fast to Implement and Cost-Effective

A cloud solution, Sage Inventory Advisor can be implemented in just hours

- Allows anytime, anywhere access.
- Eliminates local server installation.
- Provides worry-free updates and maintenance.
- Delivers rapid deployment and scalability.
- Best-in-class availability level.
- Secure data transfers and secure web interface with banking-strength encryption.

Natural ERP Integration

Sage Inventory Advisor is compatible with the most popular Sage ERP systems

- Seamless connection to Sage 100 ERP, Sage 300 ERP, and Sage ERP X3 systems.
- Eliminates manual data import/export and dynamically transmits inventory data for analysis, forecasting, replenishment, order and supplier management.
- Complements current Sage Inventory Management and Inventory Control modules to provide dynamic forecasting and planning capabilities.

Sage Group plc is the leading global supplier of business management solutions to small and medium-sized enterprises. Formed in 1981, Sage was floated on the London Stock Exchange in 1989. Sage has over 6 million customers and more than 12,600 employees worldwide. We operate in over 24 countries covering the UK, mainland Europe, North America, South Africa, Australia and New Zealand.

Contact Details

Sage Business Solutions
Level 6, 67 Albert Avenue
Chatswood NSW 2067

info.pacific@sage.com
www.sagebusiness.com.au
Call **13 sage** (Australia) | 0800 904 409 (New Zealand)

